

Texture School @ CZM-Clausthal-Zellerfeld

17th - 20th September, 2018

Registration Form

Title:  Mrs.,  Mr.,  Dr.

Family Name:.....

Given Name:.....

Affiliation:.....

.....

Address:

.....

.....

Phone:.....

FAX:.....

E-Mail:.....

Course fee:

Until 1. July.2018 --- After 1. July.2018

- 300 €                       400 €      (academic)
- 500 €                       700 €      (industry)

The number of participants is limited for the course.

Date ..... Signature.....

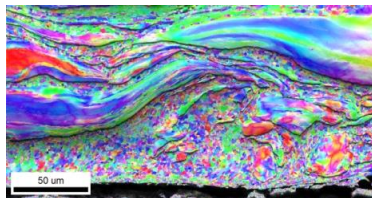
Website: <https://www.iww.tu-clausthal.de/aktuelles/veranstaltungen/>

FAX-Registration: 49(0) 4152 872666

Email-Registration:

[heinz-guenter.brokmeier@tu-clausthal.de](mailto:heinz-guenter.brokmeier@tu-clausthal.de)

September- 17, 2018  
Basics of crystallographic textures



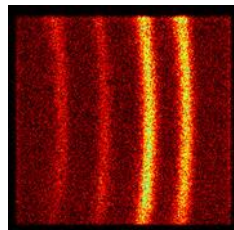
Lectures

- Introduction in crystallographic textures
- How to present crystallographic textures?

Practical

- Open discussion with some examples, in which areas crystallographic textures are needed?

September- 18, 2018  
How to measure crystallographic textures



Lectures

- Measurement of crystallographic textures (X-rays, EBSD, Neutrons, synchrotron)

Practical

- Open discussion with some examples, how to define which method shall be used?

Texture School @ CZM

Clausthal-Zellerfeld

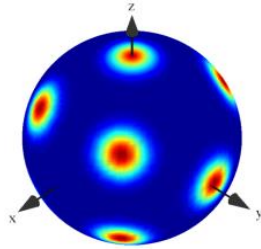
17th - 20th September, 2018



TEXMAT  
Texture Analysis on Materials Science  
IWW – TU Clausthal  
H.-G. Brokmeier

**September- 19, 2018**

**Interpretation of pole and inverse pole figure**



**Lectures**

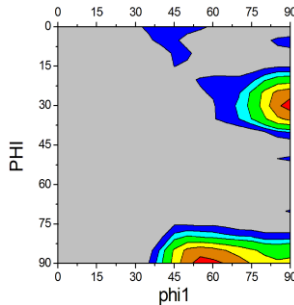
- Basic information of pole figures.

**Practical**

- Description of pole figures, how to see and prevent errors?

**September- 20, 2018**

**Interpretation of ODF**



**Lectures**

- Introduction in the orientation distribution function (ODF) figure.

**Practical**

- How to calculate ODF from pole figures and description of texture components in the ODF with open discussion.

**Your way to Clausthal**

(<http://www.tu-clausthal.de/info/anfahrt/Welcome.shtml.en>)



**By car**

From Hanover and Kassel: Highway A7 to exit Seesen; road B243 direction Osterode; after approx. 5 km road B242 to Clausthal-Zellerfeld.

From Berlin: Highway A2 to Kreuz Wolfsburg-Königsutter; highway A39 to Kreuz BS-Süd, from here direction Bad Harzburg; highway A395 to Bad Harzburger Dreieck; road B6 direction Goslar; from Goslar road B241 to Clausthal-Zellerfeld.

From Leipzig: Highway A38 to Nordhausen; road B243 direction Osterode; from Osterode road B241 to Clausthal-Zellerfeld.

**By rail and bus**

From Hanover and Berlin: Take train to Goslar; from Goslar station take bus no. 830 to Clausthal-Zellerfeld (station: "Kronenplatz").

From Kassel: Take train to Northeim or Herzberg and from there take bus to Clausthal-Zellerfeld

IWW-TU Clausthal  
 Prof. H.-G. Brokmeier  
 -Texturschule-  
 Max-Planck-Str.1, Geb.33

**21502 Geesthacht**